

# Concord Mall

4737 Concord Pike :: Wilmington, DE 19803 :: [www.concordmall.com](http://www.concordmall.com)



## Center Size

892,574 Square Feet

## Space Available

50,899 Square Feet

## Year Built

1968

## Demographics

(Population/Avg. HH Income)

5 Mile: 122,244/\$98,906

10 Mile: 504,090/\$81,569

## Daily Traffic Counts

66,000 per day

## Leasing Contact

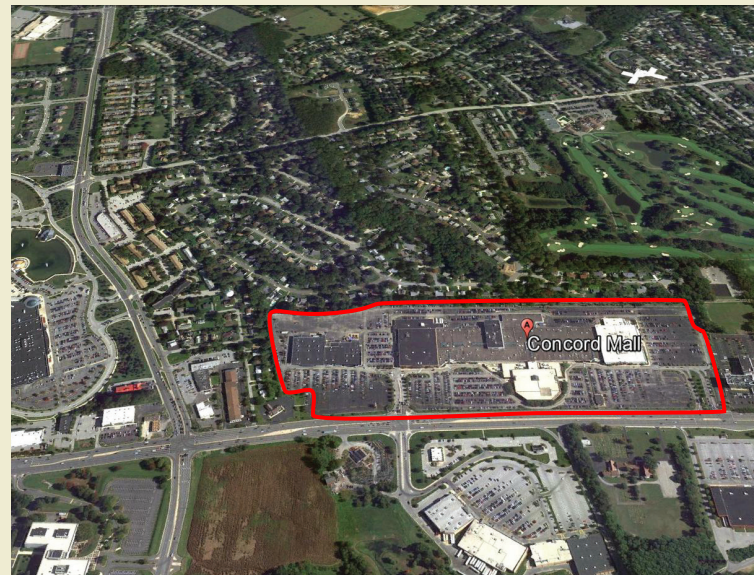
James Oeste

302.479.8314

[joeste@apropinc.com](mailto:joeste@apropinc.com)

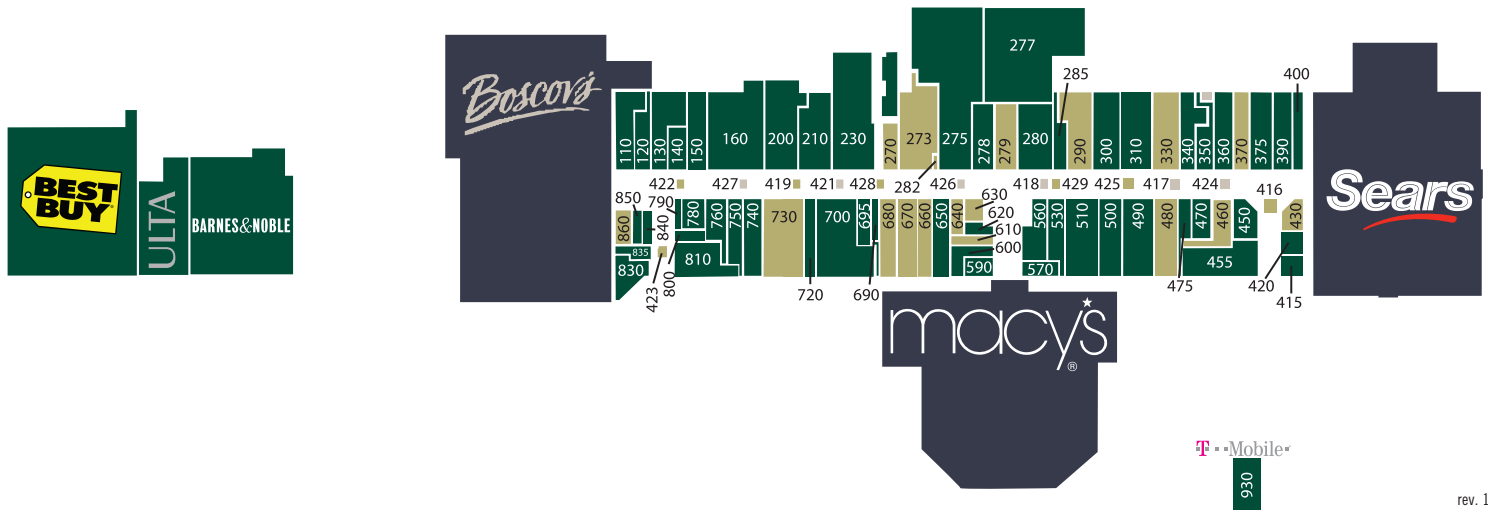
## Dominant Regional Mall

- Anchored by Macy's, Boscov's, Sears, Barnes & Noble, ULTA Beauty and Best Buy, this enclosed regional mall boasts a strong line-up of national retailers and restaurants including H&M, American Eagle, LOFT, Hollister, rue21, Bonefish Grill and Grub Burger Bar.
- Ideally located on US 202 and just minutes from the Pennsylvania and New Jersey border, Concord Mall attracts shoppers who want to take advantage of tax-free shopping in Delaware.



# Concord Mall

4737 Concord Pike :: Wilmington, DE 19803 :: www.concordmall.com



rev. 11/17

Suite	Tenant	Sq. Ft.	Suite	Tenant	Sq. Ft.	Suite	Tenant	Sq. Ft.
100	Boscov's	175,065	415	Fast Feet	1,202	610	AVAILABLE	1,017
110	LensCrafters	3,937	416	AVAILABLE	Kiosk	620	Coffee Beanery	788
120	AT&T	2,654	417	AVAILABLE	Kiosk	630	AVAILABLE	1,150
130	AB Sports	4,600	418	Ener Juice	Kiosk	640	AVAILABLE	1,112
140	Zales Jewelers	2,000	419	AVAILABLE	Kiosk	650	Bath & Body Works	3,000
150	The Children's Place	3,600	420	New Images Hair & Nails	1,400	660	AVAILABLE	2,872
160	FYE	10,000	421	Dakota Watch	Kiosk	670	AVAILABLE	3,600
200	Champs Sports	7,063	422	AVAILABLE	Kiosk	680	AVAILABLE	3,000
210	LOFT	5,591	423	AVAILABLE	Kiosk	690	Hot Topic	997
230	Macy's Home Store	52,000	424	Piercing Pagoda	Kiosk	695	Lids	1,427
270	AVAILABLE	3,718	425	AVAILABLE	Kiosk	700	New York & Co.	8,669
273	AVAILABLE	4,224	426	Sprint	Kiosk	720	Journeys	2,400
275	H&M	20,000	427	Piercing Pagoda Plus	Kiosk	730	AVAILABLE	7,200
277	Retro Fitness	13,152	428	AVAILABLE	Kiosk	740	Christopher and Banks	3,600
278	rue21	5,035	429	AVAILABLE	Kiosk	750	T-Mobile	2,700
279	AVAILABLE	4,200	430	AVAILABLE	1,736	760	Chick-fil-A	1,950
280	Famous Footwear	5,175	450	Spencer's	2,343	780	Claire's	1,657
282	AVAILABLE	220	455	Bonefish Grill	5,895	790	Subway	710
285	Yankee Candle	1,500	460	AVAILABLE	2,744	800	China Express	884
290	AVAILABLE	5,500	470	Lady Foot Locker	1,985	810	Grub Burger Bar	4,642
300	Foot Locker	4,800	475	GNC	1,200	830	Noodles & Company	2,720
310	Victoria's Secret	6,000	480	AVAILABLE	4,200	835	Cricket Wireless	1,054
330	AVAILABLE	4,800	490	American Eagle	5,760	840	Sbarro	758
340	Cafe Riviera	3,468	510	Hollister	6,240	850	Auntie Anne's Pretzels	758
350	Kids Foot Locker	2,000	530	Zumiez	2,438	860	AVAILABLE	1,515
360	Kitchen Kapers	3,600	560	Kay Jewelers	3,336	900	Best Buy	46,708
370	AVAILABLE	2,315	570	Relax Now Massage	1,378	910	ULTA Beauty	12,522
375	Lane Bryant	4,835	580	Macy's	150,000	920	Barnes & Noble	30,000
390	Hallmark	3,555	590	Verizon Wireless	1,370	930	T-Mobile	2,700
400	Payless ShoeSource	2,350	600	GameStop	1,856			
410	Sears	174,172						